

POWERSOURCE

A publication of John Deere Power Systems — Marine Edition

Fall 2018

DUTCH TALL SHIP KEEPS SPIRIT OF DISCOVERY ALIVE

PAGE 3

MAKING ALGARVE COAST ACCESSIBLE TO EVERYONE

PAGE 6

A LEGACY OF LOBSTER FISHING

PAGE 8

RAVE REVIEWS OF THE NEW POWERTECH™ 4045SFM85

PAGE 14

High-class **ISLAND HOPPING**

**EXPLORE INDONESIA'S
CORAL TRIANGLE ABOARD SEQUOIA**

PAGE 11

Article republished with permission from John Deere Power Systems, copyright 2018. Article originally appeared in the Fall, 2018 issue of Industrial PowerSource, a publication of John Deere Power Systems. For more information or to read the entire magazine, visit our website www.JohnDeere.com/powersource.



JOHN DEERE



high-class
**ISLAND
HOPPING**

**Explore Indonesia's
Coral Triangle aboard *Sequoia***

Imagine yourself aboard a privately chartered luxury yacht exploring one of earth's most biodiverse, coral-rich waters near Indonesia. The Coral Triangle is your playground, and the *Sequoia* is the vessel for exploring this vast tropical archipelago of over 17,000 islands above and below the water surface.

Aboard *Sequoia*, a 10-person crew ensures the voyage is safe and unforgettable. There's a chef and a masseuse, plus a PADI-certified dive instructor who can certify guests and lead them to the region's most secluded, biodiverse dive sites. *Sequoia* also carries equipment for diving, snorkeling, kayaking, and paddleboarding, as well as a small boat for tubing and water skiing.

Owners Kevin Corcoran and Yessi Maya Sari would like you to make this dream vacation your own. In 2017, the two entrepreneurs combined their passion for scuba diving in the region and launched Coral Triangle Safaris in eastern Indonesia.

The 26-meter (86-foot) wooden *Sequoia* is the centerpiece of their business venture. Designed as a "floating villa," *Sequoia* is handcrafted with teakwood floors, walls, and ceilings that give the vessel a rich warmth. The hull and superstructure are

built with durable hardwoods such as ironwood. Some 10,000 corrosion-resistant copper bolts fasten it all together.

"Not only is it a beautiful boat, but it's also very strong," explains Corcoran.

Corcoran and Sari wanted *Sequoia* to resemble the traditional Lambo-style vessels that have long sailed the Southeast Asian seas. Their search led them to Indonesian Bugis boat builders — a group of indigenous master craftsmen whose traditional boatbuilding skills have been passed down through the generations.

Sourcing raw tropical woods from local forests, the Bugis boat builders built the vessel from stem to stern, sawing, planing, and chiseling the timber by hand. "We had 12 carpenters, eight hours a day for four years building the vessel," says Corcoran. "All done using hand tools — a very labor-intensive undertaking."

East meets west

The owners wanted to preserve the extraordinary aesthetic tradition of the Indonesian vessel while modernizing a few key aspects to create a liveaboard charter yacht experience. One of these modifications included powering the vessel with a reliable diesel engine for improved performance and safety. Shepherding the vessel's construction, the owners wanted to make sure these time-honored boatbuilding traditions melded with modern safety standard guidelines.

"There's one thing that we're laser-focused on — safety, safety, safety," says Corcoran. "Our goal is that families around the world can explore the Coral Triangle knowing they will be safe and secure."

Once *Sequoia's* hull was built, the pair began the process of selecting an engine, marine

26 METERS

The *Sequoia*, the centerpiece of Corcoran and Sari's business venture, spans 26 meters (86 feet).

1700 rpm

When relocating to different regions, the boat often cruises seven days non-stop at 1700 rpm against very strong currents.

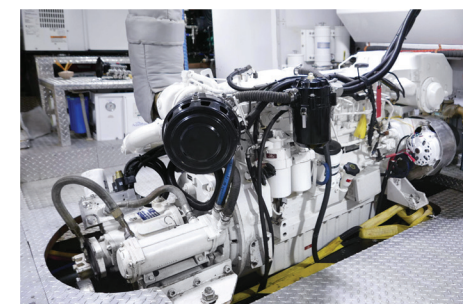
10 A 10-person crew (that includes a chef and masseuse) ensures each voyage is safe and unforgettable.

12

Corcoran and Sari invested in hiring 12 carpenters who worked eight hours a day for four years to build the vessel.



A few steps up to the sky deck delivers stunning views of the tropical paradise.



A 242-kW (325-hp) 9.0L engine powers a 97x66-centimeter (38x26-inch) propeller through a ZF 325-1 transmission with a 3:1 gear ratio. Trellenberg engine mounts provide smooth operation.



Two deluxe bedrooms feature en-suite bathrooms.

gear, navigation equipment, and other mechanical systems. After a year researching engines, the couple selected a John Deere PowerTech™ 6090AFM85 engine.

The engineers and builders installed the engine and marine gear in Indonesia as the hull was being built. The 242-kW (325-hp) engine was paired to a 97x66 centimeter (38x26-inch) propeller through a ZF 325-1 transmission with a 3:1 gear ratio. Once launched, John Deere Pacific Pte Ltd in Singapore traveled to Indonesia to inspect the installation and conduct the sea trial.

After a season on the water, Corcoran says he's impressed with the engine's performance. "We wanted a continuous-

duty engine with low-end torque that is very fuel efficient. Our John Deere 6090 achieves maximum torque at only 1700 rpm. This is extremely important cruising the Pacific where currents can be very powerful," says Corcoran.

"There's such great technology coming out of John Deere ... I'm really glad we picked this engine," says Corcoran. "When you're in the middle of the blue waters of the Pacific, we rest assured knowing that we have reliable, efficient power to get our guests to their next destination."

Distributor for Singapore, Malaysia, Indonesia, and China: JD Pacific Pte Ltd in Singapore; www.jdpacs.com

Doyle sails harness ocean breezes while a John Deere propulsion engine offers reliable propulsion power.